

LED indicators for plastic housings



IP60

LED indicators for front panel mounting in plastic housing – IP60 protection.

Page 3.15.2



IP65

LED indicators for front panel mounting in plastic housing – IP65 protection.

Page 3.15.2

LED indicators for metal housings



IP40

LED indicators for front panel mounting in metal housing – IP40 protection.

Page 3.15.3

LED indicators for front panel mounting

LED
Plastic housing



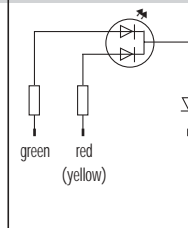
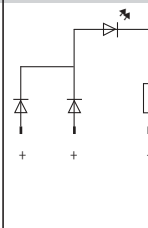
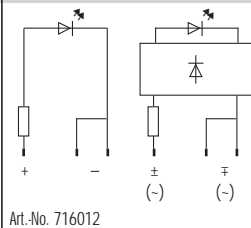
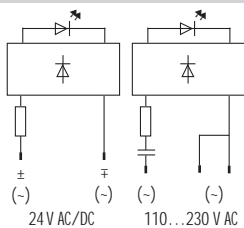
LED
Plastic housing



LED
Plastic housing
with lamp test input

LED 2F
2 color LED
in plastic housing

Circuit diagram



Ordering data

Ordering data		Art.-No.	Art.-No.	Art.-No.	Art.-No.
Voltage	LED color				
	24 V	red	71001	71261	71361
		yellow	71021	71271	71371
		green	71041	71281	71381
		blue		24 V DC	716012
	red/green				71250
	yellow/green				71255
110 V	red	71007	71267		
	yellow	71027	71277		
	green	71047	71287		
230 V	red	71007	71269		
	yellow	71027	71279		
	green	71047	71289		
	blue		716015		

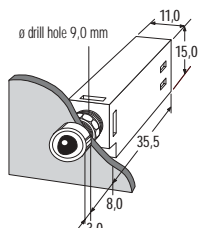
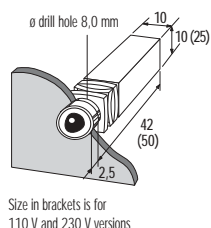
Technical data

Voltage	24 V AC/DC	±15 %	24 V AC/DC	±15 %	24 V DC	±15 %	24 V DC	±15 %
	110 V AC	±15 %	110 V AC/DC	±15 %	–	–	–	–
	230 V AC	±10 %	230 V AC	±10 %	–	–	–	–
Current usage	10 mA each LED		10 mA each LED					
LED	∅ 5 mm		∅ 5 mm					
Connection	Faston 2,8 x 0,8 mm		Faston 2,8 x 0,8 mm					
Protection to IEC529 (DIN 40050)	IP60		IP65					
Temperature range	-20...+50 °C		-20...+50 °C					
Housing	flame retardant plastic		flame retardant plastic					

Accessories

	Art.-No.
Mounting key for plastic nut	71998
Metal front nut	71991
Blind plug	71995

Assembly/Dimension drawing



Notes

LED indicators to IP65 are with opaque LEDs (milk white).
The LED modules are suitable for wall thickness between 1,5 and 5,0 mm

LED indicators for front panel mounting

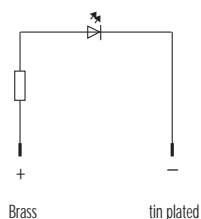
LED 3 M Metal housing

LED 5 M Metal housing

LED 10 M Metal housing



Circuit diagram

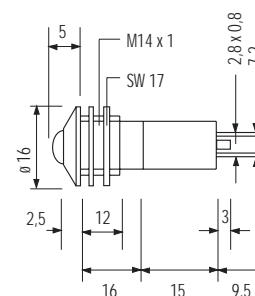
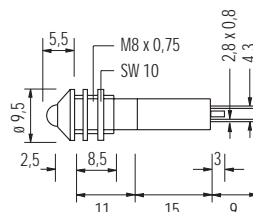
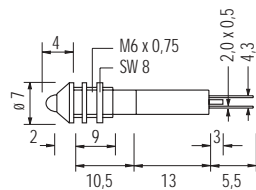


Ordering data		Art.-No.	Art.-No.	Art.-No.
Voltage	LED color			
24 V DC ± 10 %	red Ø 3 mm	71403		
	yellow Ø 3 mm	71423		
	green Ø 3 mm	71443		
24 V DC ± 10 %	red Ø 5 mm		71405	
	yellow Ø 5 mm		71425	
	green Ø 5 mm		71445	
24 V DC ± 10 %	red Ø10 mm			71410
	yellow Ø10 mm			71430
	green Ø10 mm			71450

Technical data

Current usage	20 mA each LED		
LED	Ø 3 mm	Ø 5 mm	Ø 10 mm
Connection	Faston 2,0 x 0,5 mm	Faston 2,8 x 0,8 mm	
Protection to IEC 529 (DIN 40050)	IP40		
Temperature range	-30...+70 °C		
Housing	Brass, chrome plated		
Dimensions	Ø 7 x 33 mm	Ø 9,5 x 40 mm	Ø 16 x 45 mm
Front panel hole diameter	Ø 6 mm	Ø 8 mm	Ø 14 mm

Dimension drawing



Accessories	Art.-No.	Art.-No.	Art.-No.
Mounting adapter for diameter of 22.5 mm	71490	71491	71492

Notes

+ Connection Brass, - connection tin plated