

Series **AMW**

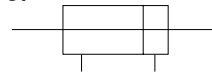
Double Rod End Type

Bore size / $\phi 40$, $\phi 50$, $\phi 63$, $\phi 80$, $\phi 100$

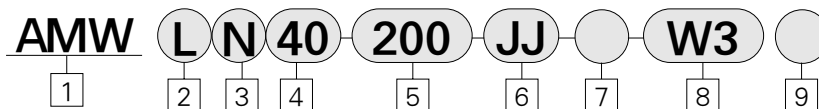


- DOUBLE ROD END TYPE CYLINDER
- LONG LIFE, HIGH SPEED OPERATION POSSIBLE
- NON-LUBRICATED OPERATION POSSIBLE
- AUTO SWITCH CAN BE MOUNTED (TIE ROD MOUNT TYPE)

Symbol



How to Order



1 Double Rod End Cylinder Built-in Magnet

2 Mounting

3 Type

Blank : Lubricated
N : Non-lube
H : Air-hydro

4 Bore Size

5 Stroke

6 Rod Boot

J : Nylon tarpaulin(Single gaiter)
JJ : Nylon tarpaulin(Double gaiter)
K : Neoprene cloth(Single gaiter)
KK : Neoprene cloth(Double gaiter)

7 Order Made Option

8 Applicable Auto Switch

9 Number of Switch

Cylinder Stroke (mm)

Bore Size	Standard Stroke
$\phi 40$	25, 50, 75, 100, 125, 150, 175, 200, 250, 300, 350, 400, 450, 500
$\phi 50$	25, 50, 75, 100, 125, 150, 175, 200, 250, 300, 350, 400, 450, 500, 600
$\phi 63$	25, 50, 75, 100, 125, 150, 175, 200, 250, 300, 350, 400, 450, 500, 600
$\phi 80$	25, 50, 75, 100, 125, 150, 175, 200, 250, 300, 350, 400, 450, 500, 600, 700
$\phi 100$	25, 50, 75, 100, 125, 150, 175, 200, 250, 300, 350, 400, 450, 500, 600, 700

※ Other how to Order:

Same as that of Series AM/How to Order(Refer to page A-126)

ACP

UACP

AX

AS

AM

AL
ALX

UARD

UAQ

AJ

AG

UAG

ADM

ADR

AMR

UAMR

AST

W~

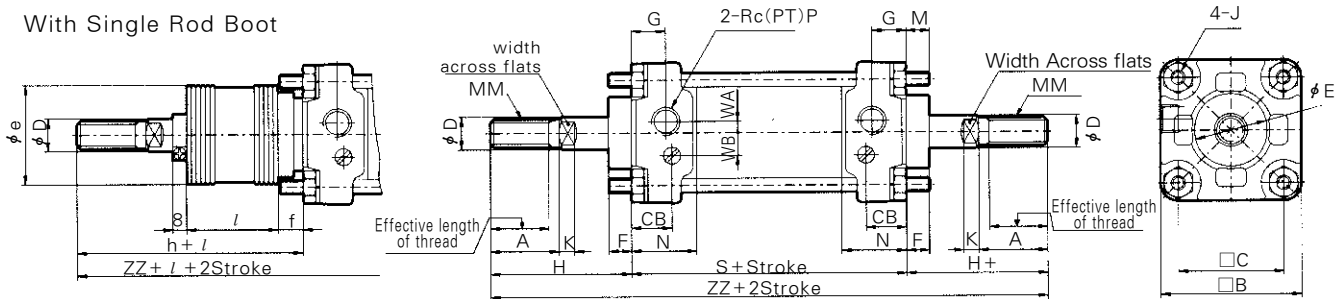
Specifications

Type	Lube-Non-lube	Air-hydro
Fluid	Air	L.P.Oil
Proof pressure	15kgf/cm ² {1,500kPa}	
Max.operating pressure	9.9kgf/cm ² {990kPa}	
Min.operating pressure	0.8kgf/cm ² {80kPa}	1.6kgf/cm ² {160kPa}
Piston speed	50~500mm/s	0.5~300mm/s
Ambient and fluid temperature	5~60°C	
Cushion	Both side	None
Stroke tolerance	~250 st : $^{+0}_{-0.1}$, 251~750 st : $^{+0}_{-0.15}$	
Mounting	Basic, Foot, Flange, Center trunnion	

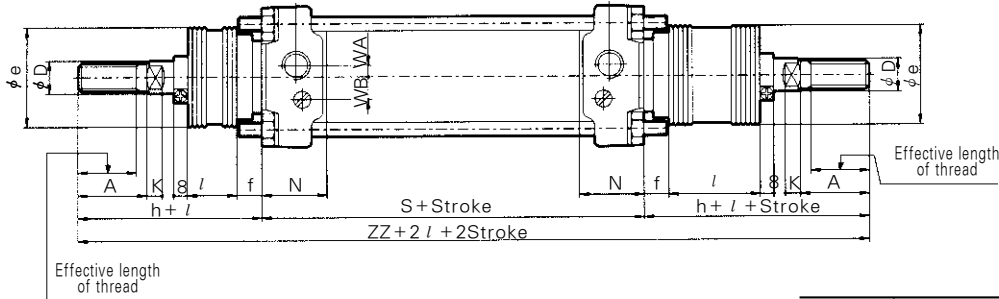
Basic Type/(B)

Lube Type(AMWB), Non-Lube Type(AMWBN), Air-Hydro Type(AMWBH)

With Single Rod Boot



With Double Rod Boot



Bore size (mm)	Without Rod Boot		With Rod Boot(Single)					(Double)	
	H	ZZ	ϕe	f	h	l	ZZ	ZZ	
$\phi 40$	51	186	43	11.2	59	1/4 Stroke	194	202	
$\phi 50$	58	206	52	11.2	66		214	222	
$\phi 63$	58	214	52	11.2	66		222	230	
$\phi 80$	71	258	65	12.5	80		267	276	
$\phi 100$	72	270	65	14.0	81		279	288	

Bore size (mm)	Stroke range(mm)		Effective length of thread	A	$\square B$	$\square C$	CA	CB	ϕD	ϕE	F	G	J	K	M	MM	N	P	S	WA	WB
	Without Rod Boot	With Rod Boot																			
$\phi 40$	~500	20~500	27	30	60	44	18	18	16	32	10	15	M8×1.25	6	11	M14×1.5	27	1/4	84	5	10.5
$\phi 50$	~600	20~600	32	35	70	52	21	21	20	40	10	17	M8×1.25	7	11	M18×1.5	30	3/8	90	8	9.9
$\phi 63$	~600	20~600	32	35	85	64	21	21	20	40	10	17	M10×1.25	7	14	M18×1.5	31	3/8	98	9	11.5
$\phi 80$	~750	20~750	37	40	102	78	26	26	25	52	14	21	M12×1.75	11	17	M22×1.5	37	1/2	116	11	13
$\phi 100$	~750	20~750	37	40	116	92	28	28	30	52	14	21	M12×1.75	11	17	M26×1.5	40	1/2	126	13	14