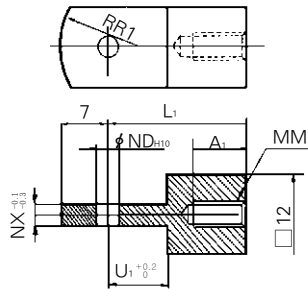


## Accessories/Parts List

(mm)

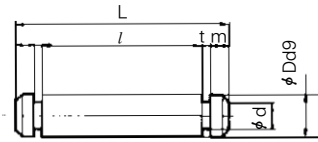
### Single Knuckle Joint



Material: Rolled steel

PART No	Bore	A <sub>1</sub>	L <sub>1</sub>	MM	ND <sup>H10</sup>	NX	R <sub>1</sub>	U <sub>1</sub>
ACP 010-17	φ10	8	21	M4×0.7	3.3 <sup>+0.048/0</sup>	3.1	8	9
ACP 016-17	φ16	8	25	M5×0.8	5 <sup>+0.048/0</sup>	6.4	12	14

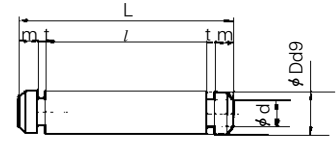
### Clevis Pin



Material: Stainless steel

PART No	Bore	D <sup>d9</sup>	d	L	l	m	t	Clib
ACP 010-23A	φ10	3.3 <sup>-0.030/-0.060</sup>	3	15.2	12.2	1.2	0.3	CType 3.2
ACP 016-23A	φ16	5 <sup>-0.030/-0.060</sup>	4.8	22.7	18.3	1.5	0.7	CType 5

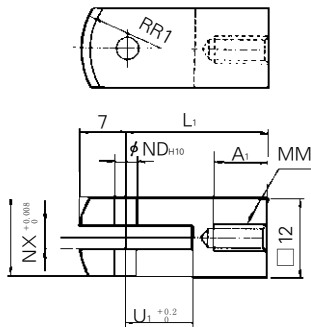
### Knuckle Pin



Material: Stainless steel

PART No	Bore	D <sup>d9</sup>	d	L	l	m	t	Clib
ACP 010-23B	φ10	3.3 <sup>-0.030/-0.060</sup>	3	16.2	12.2	1.7	0.3	CType 3.2
ACP 016-23B	φ16	5 <sup>-0.030/-0.060</sup>	4.8	16.6	12.2	1.5	0.7	CType 5

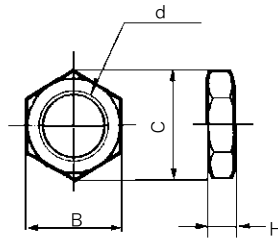
### Double Knuckle Joint



Material: Rolled steel

PART No	Bore	A <sub>1</sub>	L <sub>1</sub>	MM	ND <sup>H10</sup>	NX	U <sub>1</sub>	R <sub>1</sub>
ACP 010-18	φ10	8	21	M4×0.7	3.3 <sup>+0.048/0</sup>	3.2	10	8
ACP 016-18	φ16	11	21	M5×0.8	5 <sup>+0.048/0</sup>	6.5	10	12

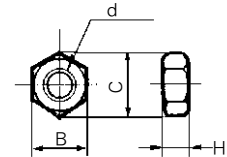
### Mounting Nut



Material: Brass

PART No	Bore	B	C	d	H
ACP 006-13A	φ6	8	9.2	M6×1.0	4
ACP 010-13A	φ10	11	12.7	M8×1.0	4
ACP 016-13A	φ16	14	16.2	M10×1.0	4

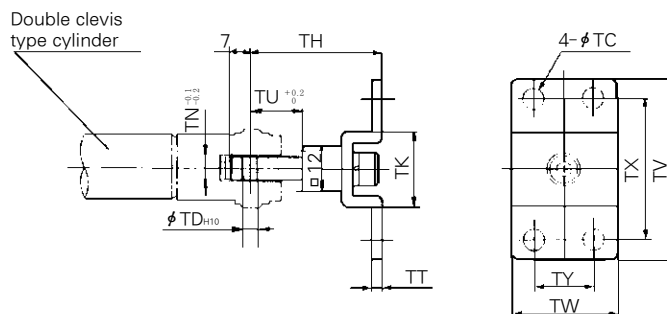
### Rod End Nut



Material: Steel

Bore	B	C	d	H
φ6	5.5	6.4	M3×0.5	2.4
φ10	7	8.1	M4×0.7	3.2
φ16	8	9.2	M5×0.8	4

### T Mounting



(mm)

PART No	Bore size	TD	TD <sup>H10</sup>	TH	TK	TN	TT	TU	TV	TW	TX	TY
ACP 010-42B	φ10	4.5	3.3 <sup>+0.048/0</sup>	29	18	3.1	2	9	40	22	32	12
ACP 016-42B	φ16	5.5	5 <sup>+0.048/0</sup>	35	20	6.4	2.3	14	48	28	38	16