

Series **ACPW**

Standard Type/Double Acting : Double Rod

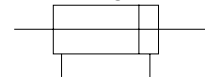
Bore Size : $\phi 6$, $\phi 10$, $\phi 16$



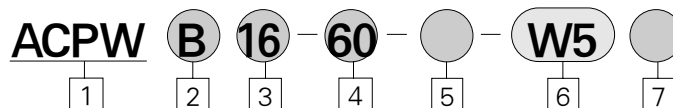
- STAINLESS STEEL BODY FOR HIGH CYCLE LIFE & LOW BREAKAWAY
- EASY MOUNTING
- BUMPERS STANDARD
- BUILT-IN MAGNET
- LIGHT COMPACT DESIGN
- MANUFACTURING CERTIFIED TO ISO 9001/9002 STANDARDS

Symbol

Double Acting/Double Rod



How to Order



- 1 Air Cylinder**
Built-in magnet, Rubber cushions are Standard
- 2 Mounting**
B : Standard type
L : Axial foot type
F : Rod side flange type
- 3 Bore Size**
6 : $\phi 6$
10 : $\phi 10$
16 : $\phi 16$
- 4 Stroke/(mm)**
※ For Stroke Refer to Page A-10

- 5 Special Option**
Blank : Standard
XC16 : Copper-free
- 6 Applicable Auto Switch**
(Band mounted type)
W5 : Reed Switch
(Rail mounted type)
※ Standard Lead 0.5m(Up to 3m Optional)
- 7 Number of switches**
Blank : 2 pcs.
S : 1 pc.
N : (n) pcs.

ACP

UACP

AX

AS

AM

AL
ALX

UARD

UAQ

AJ

AG

UAG

ADM

ADR

AMR

UAMR

AST

W~

PART No. of Mounting Bracket

Mounting Bracket	Bore size(mm)		
	φ 6	φ 10	φ 16
Foot	ACP006-19	ACP010-19	ACP016-19
Flange	ACP006-20	ACP010-20	ACP016-20

PART No. of Auto Switch Mounting Band

Bore Size	PART No. of auto Switch Mounting Band	Note
φ 6	ACP006	Common use to all of UW5□ types
φ 10	ACP010	
φ 16	ACP016	

Standard Type/Double Acting : Double Rod/Series ACPW

Specifications

Action	Double Acting Single Rod	
Fluid	Air	
Proof Pressure	10.5kgf/cm ² (1.05MPa)	
Max. Operating Pressure	7.0kgf/cm ² (0.7MPa)	
Min. Operating Pressure	φ 6	1.2kgf/cm ² (0.12MPa)
	φ 10, φ 16	0.6kgf/cm ² (0.06MPa)
Ambient and Fluid Temperature	40~140 ° F (5 ~ 60℃)	
Cushion	Rubber cushion (Standard)	
Lubrication	None (Non-Lube)	
Piston Speed	50~750 mm/sec	

Auto Switch Specifications

Mounting	Bore Size	Reed Switch
		Grommet
Band mounted type	φ 6, φ 10, φ 16	UW5 type

Mounting and Accessories

Mounting		Basic Type	Foot Type	Flange Type
Standard	Mounting Nut	●	●	●
	Rod End Nut	●	●	●
Option	Single Knuckle Joint	●	●	●
	Double Knuckle Joint(With Pin)	●	●	●

Weight Table

(gf)

Bore Size (mm)		φ 6	φ 10	φ 16
※ Basic Weight		27	35	70
Additional Weight for each 15 of Stroke		3	6	9
Mounting Bracket Weight	Foot Type	14	14	38
	Flange Type	5	5	13

※ Including the weights of mounting nut and rod end nut in the reference weight.

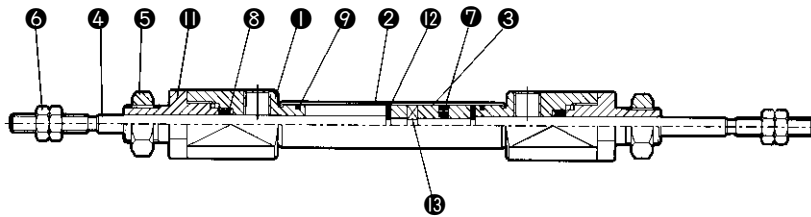
※ Double clevis type is not included with mounting nut.

Standard Stroke

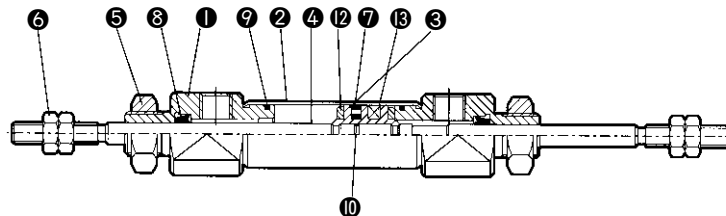
Bore Size(mm)	Standard Stroke(mm)
φ 6	10, 15, 20, 25, 30,
	35, 40, 45, 50, 60
φ 10	10, 15, 20, 25, 30, 35,
φ 16	40, 45, 50, 60, 75, 100

Construction/Parts List

ACPWB 6



ACPWB 10, 16



Parts List

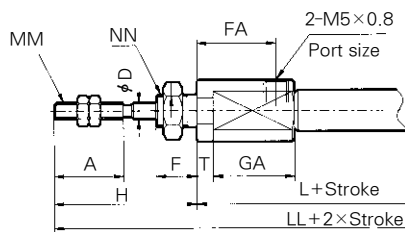
No.	Description	Material	Note
①	Rod Cover	Aluminum Alloy	White Alumite
②	Cylinder Tube	Stainless Steel	
③	Piston	Brass	
④	Piston Rod	Stainless Steel	
⑤	Mounting Nut	Brass	Nickel Plated
⑥	Rod end Nut	Rolled Steel	Nickel Plated
⑦	Piston Packing	NBR	

No.	Description	Material	Note
⑧	Rod packing	NBR	
⑨	Tube gasket	NBR	
⑩	Piston gasket	NBR	
⑪	Packing retainer	Aluminum alloy	
⑫	Bumper	Urethane	
⑬	Magnet	-	

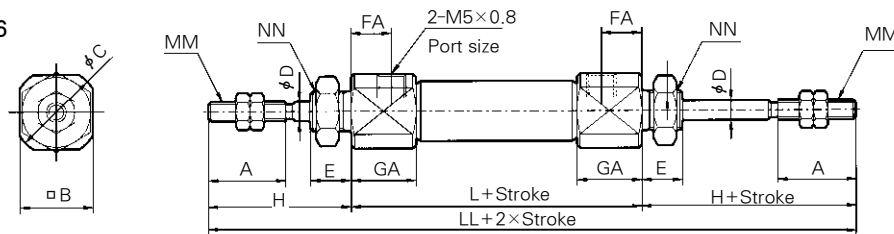
Standard Type (ACPWB)

ACPWB (Bore size) (Stroke)

ACPWB6
Rod Cover



ACPWB10,16



(mm)

Bore size	A	B	C	D	E	FA	H	MM	GA	NN	L	T	LL
φ 6	15	12	14	3	8	14.5	28	M3×0.5	16	M6×1.0	68.5	3	124.5
φ 10	15	12	14	4	8	8	28	M4×0.7	12.5	M8×1.0	48	-	104
φ 16	15	8	20	5	8	8	28	M5×0.8	12.5	M10×1.0	48	-	104

ACP

UACP

AX

AS

AM

AL

ALX

UARD

UAQ

AJ

AG

UAG

ADM

ADR

AMR

UAMR

AST

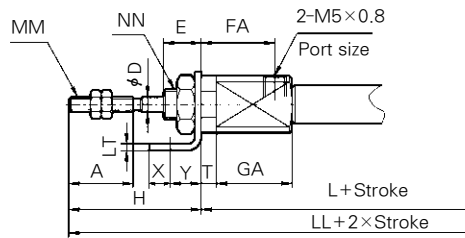
W~

Series ACPW

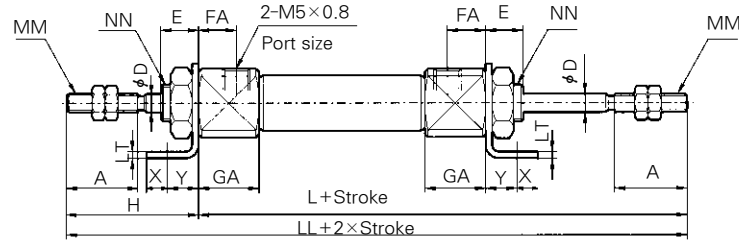
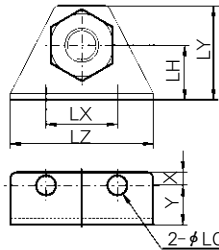
Foot Type (ACPWL)

ACPWL **Bore size** **Stroke**

ACPWL6
Rod Cover



ACPWL10,16



Mounting hole

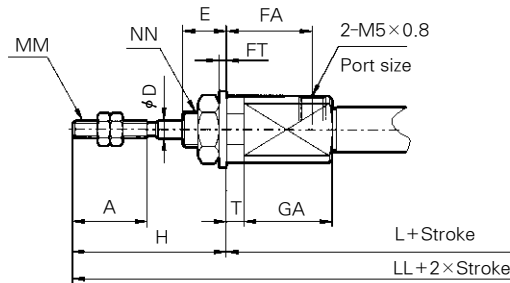
(mm)

Bore size	A	D	E	FA	H	LC	LH	LT	LX	LY	LZ	MM	GA	NN	L	T	X	Y	LL
φ6	15	3	8	14.5	28	4.5	9	1.6	24	16.5	32	M3×0.5	16	M6×1.0	68.5	3	5	7	124.5
φ10	15	4	8	8	28	4.5	9	1.6	24	16.5	32	M4×0.7	12.5	M8×1.0	48	-	5	7	104
φ16	15	5	8	8	28	5.5	14	2.3	33	25	42	M5×0.8	12.5	M10×1.0	48	-	6	9	104

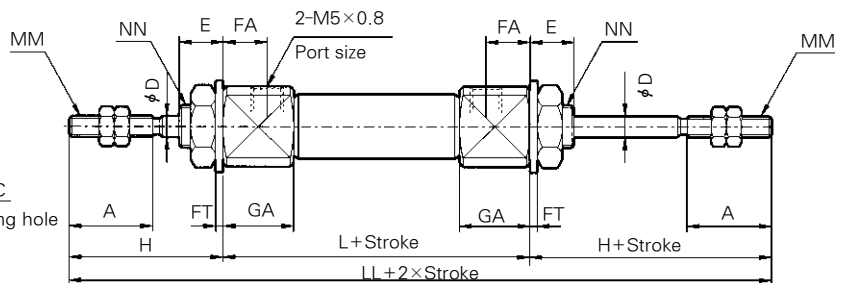
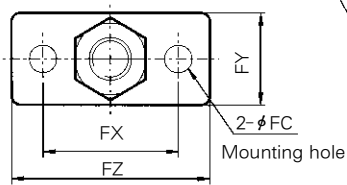
Flange Type (ACPWF)

ACPWF **Bore size** **Stroke**

ACPWF 6
Rod Cover



ACPWF10,16



(mm)

Bore size	A	D	E	FC	FT	FX	FY	FZ	FA	H	MM	GA	NN	L	T	LL
φ6	15	3	8	4.5	1.6	24	14	32	14.5	28	M3×0.5	16	M6×1.0	68.5	3	124.5
φ10	15	4	8	4.5	1.6	24	14	32	8	28	M4×0.7	12.5	M8×1.0	48	-	104
φ16	15	5	8	5.5	2.3	33	20	42	8	28	M5×0.8	12.5	M10×1.0	48	-	104