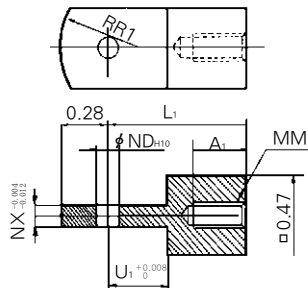


# Series UACP

## Accessories/Parts List

(inch)

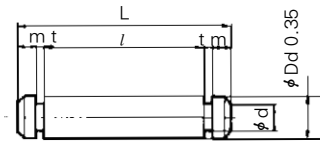
### Single Knuckle Joint



Material: Rolled steel

PART No	Bore	A <sub>1</sub>	L <sub>1</sub>	MM	ND <sup>H10</sup>	NX	U <sub>1</sub>	R <sub>1</sub>
UACP 010-17	φ10	0.320	0.83	6-40 UNF	0.13 <sup>+0.002</sup>	0.120	0.320	0.35
UACP 016-17	φ16	0.320	0.98	10-32 UNF	0.20 <sup>+0.002</sup>	0.250	0.470	0.55

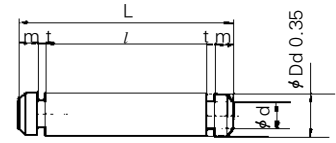
### Clevis Pin



Material: Stainless steel

PART No	Bore	Ddg(9)	d	L	l	m	t	Clib
ACP 010-23A	φ10	0.13 <sup>+0.001</sup> <sub>-0.002</sub>	0.13	0.12	0.60	0.48	0.05	CType 0.01
ACP 016-23A	φ16	0.20 <sup>+0.001</sup> <sub>-0.002</sub>	0.20	0.19	0.89	0.72	0.06	CType 0.03

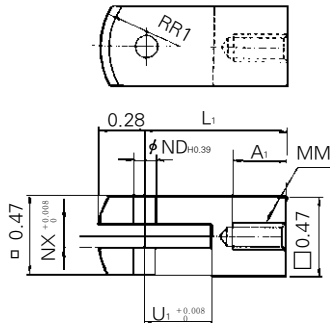
### Knuckle Pin



Material: Stainless steel

PART No	Bore	Ddg(9)	d	L	l	m	t	Clib
ACP 010-23B	φ10	0.13 <sup>+0.001</sup> <sub>-0.002</sub>	0.13	0.12	0.64	0.48	0.07	CType 0.01
ACP 016-23B	φ16	0.20 <sup>+0.001</sup> <sub>-0.002</sub>	0.20	0.19	0.85	0.48	0.06	CType 0.03

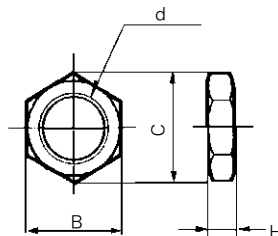
### Double Knuckle Joint



Material: Rolled steel

PART No	Bore	A <sub>1</sub>	L <sub>1</sub>	MM	ND <sup>H0</sup>	NX	U <sub>1</sub>	R <sub>1</sub>
UACP 010-18	φ10	0.320	0.93	6-40 UNF	0.13 <sup>+0.048</sup>	0.130	0.390	0.32
UACP 016-18	φ16	0.430	0.83	10-32 UNF	0.20 <sup>+0.048</sup>	0.130	0.390	0.47

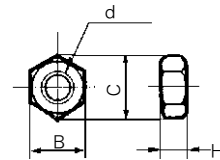
### Mounting Nut



Material: Brass

PART No	Bore	B	C	d	H
UACP 006-13A	φ6	0.44	0.50	1/4-28 UNF	0.16
UACP 010-13A	φ10	0.50	0.58	5/16-24 UNF	0.19
UACP 016-13A	φ16	0.56	0.65	3/8-24 UNF	0.23

### Rod End Nut



Material: Steel

Bore	B	C	d	H
φ6	0.31	0.11	5-40 UNC	0.11
φ10	0.31	0.36	6-40 UNF	0.11
φ16	0.38	0.43	10-32 UNF	0.13