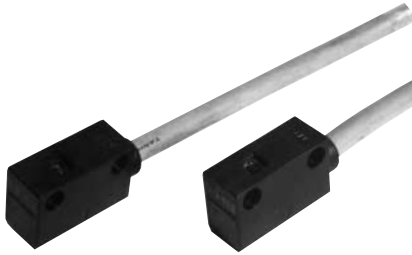


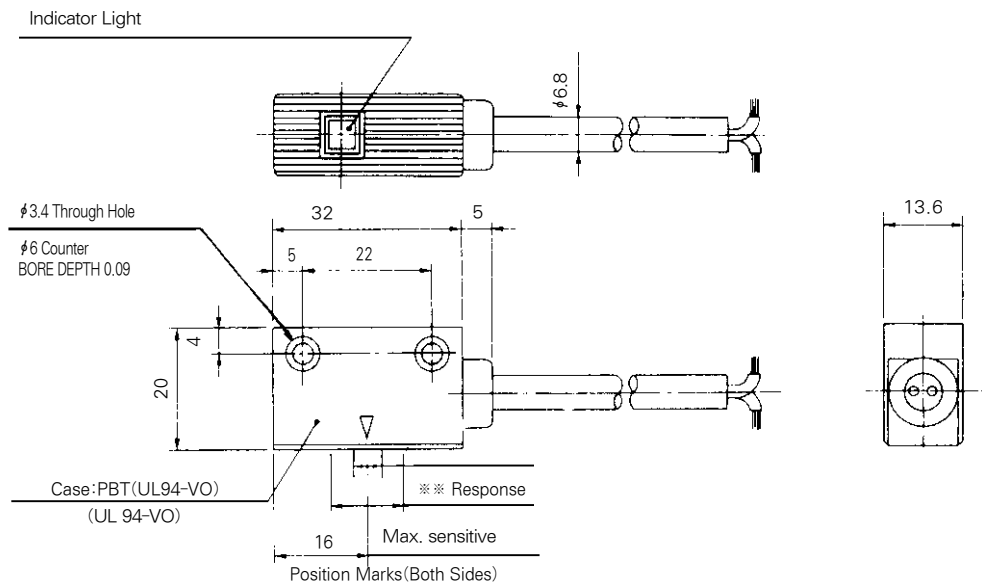
# Automatic Reed Switch / Intense-Magnetism-Resistant Type / Series W6/W7



## Auto Switch Specifications

Auto Switch model	W6(L)(Z)	W7(L)(Z)	
Operating Voltage	AC120V	DC24V	AC100V
Operating Current Range	20mA	5~40mA	5~20mA
Internal Voltage Drop	0V	Max 2.4V	
Operating Time	1.2m/sec		
Impact Resistance	30G		
Protective Construction	IEC Standard IP67		
Pilot Lamp	OFF Lighting (Red LED)	ON Lighting (Red LED)	
Current Leakage	MAX. 1.8mA	0	
Ambient Temperature Range	-10~60℃		
Insulation Resistance	50MΩ/500V DC		
Application	Relay, Sequence Controller		

## Auto Switch Dimensions (mm)



## Operation Range (Dimension)

Series	Bore Size(mm)	
	φ 50	φ 63
ADQCP	8	8
AMD□P	9	9
AJCP	8	8