

# Series **AJM**

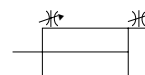
## Clamp Cylinder / With Intense-Magnetism Resistant Auto Switch

Bore size :  $\phi 32$ ,  $\phi 50$ ,  $\phi 63$

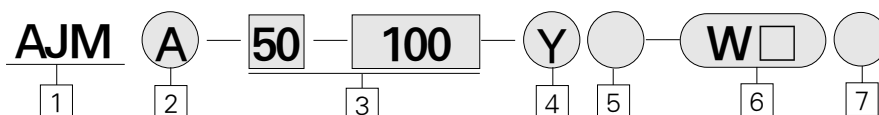


- TWO TYPES OF CLEVIS WIDTH ARE AVAILABLE(16.5mm, 19.5mm EXCEPT  $\phi 32$ )
- GAITER IS UNNECESSARY BECAUSE A HEAVY DUTY COIL SCRAPER IS PROVIDED AS A COUNTER MEASURE AGAINST SPATTER, ROD BOOT IS UNNECESSARY
- BUILT - IN MAGNET

Symbol



### How to Order



**1** Clamp Cylinder  
With intense - magnetism  
resistant auto switch

**2** Clevis Width  
A : 16.5mm( $\phi 50$ ,  $\phi 63$ )  
16<sup>+0.4</sup><sub>-0.2</sub>mm( $\phi 32$ )  
B : 19.5mm( $\phi 50$ ,  $\phi 63$ )

**3** Bore Size / Stroke(mm)  
32 :  $\phi 32$  - 50, 75, 100, 125, 150  
200, 250, 300  
50 :  $\phi 50$  - 50, 75, 100, 125, 150  
63 :  $\phi 63$  - 50, 75, 100, 125, 150

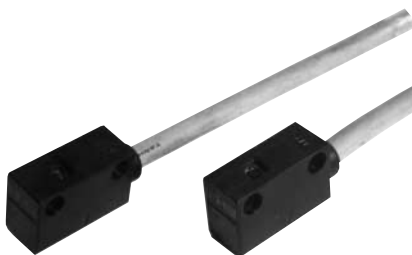
**4** Accessories  
Blank : None  
I : Single knuckle joint  
Y : Double knuckle joint

**5** Mount  
B : Limit switch mount  
D : Cam mount  
19 : Foot mount

**6** Applicable Auto Switch  
W6 : 24VDC, OFF lighting  
W7 : 24VDC, 100VAC,  
ON lighting  
\* Refer to auto switch specification  
W2 : 24VDC, For Welding  
Machine, Intense  
Magnetic Field  
W3 : 24VDC, 100 · 200VAC

**7** Number of Switch  
Blank : 2 pcs  
S : 1 pc  
N : N pcs

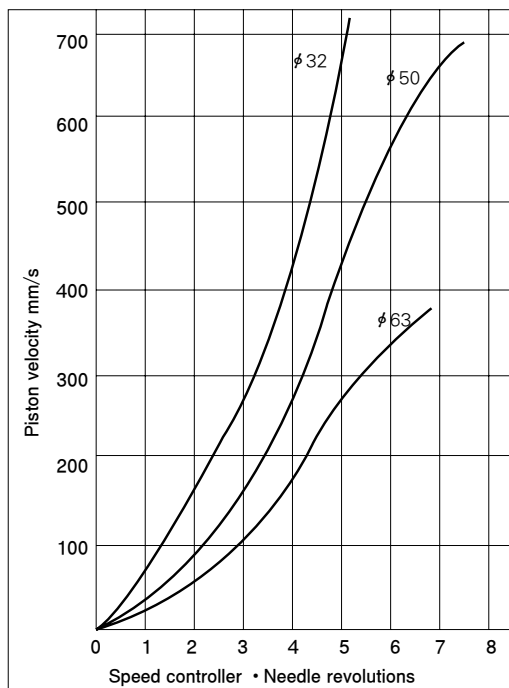




## Auto Switch Specifications

Switch model NO.	W6(L), (Z)	W7(L), (Z)	
Switch type	Reed switch		
Operating voltage	AC100V	DC24V	AC100V
Operating Current circuit	20mA	5~40mA	5~20mA
Operating time	1.2mS		
Internal drop voltage	Nil	2.4V	
Leakge current Polarity	Max. 1.8mA	0	
Impact resistance	Operating	Present	
Pilot lamp	30G		
Type of lead wire	Oilproof, fire-resistant vinyl capttype cord : 0.75mm <sup>2</sup> × 2		
Lead wire length	0.5m, (3m), (5m)		
Ambient and fluid temperature	5~60℃		
Insulation resistance	50MΩ max. at DC 500V		
Protective construction	IEC : IP67 JIS CO920(Watertight)		
Application	Sequence controller relay		

## Speed Controller Needle Revolutions And Corresponding Cylinder Speed



Conditions : OUT side supply pressure 5kgf/cm<sup>2</sup>,  
No-load