

Series **UADQCP**

Compact Cylinder for Intense-Magnetism Resistant

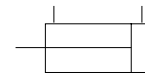
Bore Size mm(inch) : $\phi 50(2 \text{ Nom})$, $\phi 63(2 \frac{1}{2} \text{ Nom})$



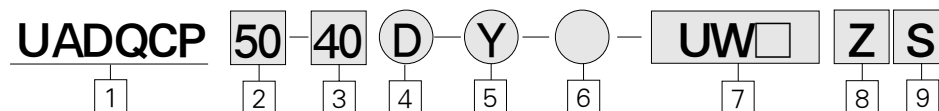
- FOR WELDING MACHINE/INTENSE MAGNETIC FIELD
- SPACE SAVING COMPACT DESIGN
- MANUFACTURING CERTIFIED TO ISO 9001/9002 STANDARDS

Symbol

Double Acting/
Single Rod Type



How to Order



1 Series : Compact Cylinder for Intense-Magnetism Resistant

2 Bore Size mm(inch)
50 : $\phi 50 (2 \text{ Nom.})$
63 : $\phi 63 (2 \frac{1}{2} \text{ Nom.})$

3 Standard Stroke(mm)
50 : 25, 30, 35, 40, 45, 50
63 : 25, 30, 35, 40, 45, 50

4 Double Acting : D

5 Rod End Options
Blank : Without attachment
Y : With double knuckle joint pin, flat washer, split pin

6 Special Option
Blank : Standard Type

7 Auto Switch
Blank : Without auto switch
UW6 : 120VAC, OFF lighting
UW7 : 24VDC, 120VDC, ON lighting
* For details, Please refer to Page 43.

8 Switch Lead Wire Length
L : 3m
Z : 5m

9 Number of Switches
Blank : 2 pcs.
S : 1 pc.

PART No. of Auto Switch Fittings

Switch	Part No.	
	$\phi 50 (2 \text{ Nom})$	$\phi 63 (2 \frac{1}{2} \text{ Nom.})$
UW6,UW7	BQP1T-050	

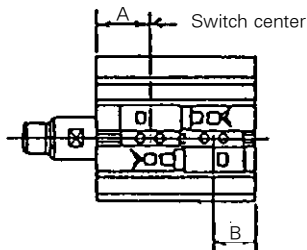
Cylinder Specifications

Type	UADQCP
Fluid	Air
Bore Size mm(inch)	$\phi 50 (2 \text{ Nom.})$, $\phi 63 (2 \frac{1}{2} \text{ Nom.})$
Max. Operating Pressure	140 PSI {1.0 MPa}
Proof Pressure	231 PSI {1.5 MPa}
Ambient Fluid Temperature	40~140° F
Thread end Tolerance	KS Grade 2
Stroke Tolerance	$^{+0.039}_0$ inch

Minimum stroke for mounting intense-magnetism resistant switch. (mm)

Switch Mounting Position	With 1 Switch	With 2 Switches		
		Same surface	Different Surfaces	Different Surfaces
Cylinder Type Bore				
UADQCP50,63	25	30	25	

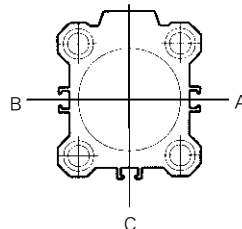
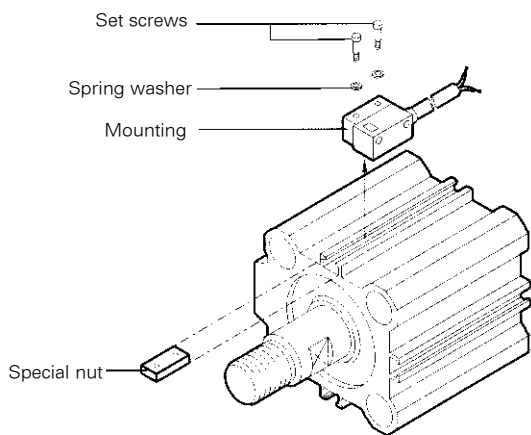
Auto Switch Mounting Position (Stroke End) (mm)



Type	Bore	φ 50 (2Nom.)		φ 63 (2 1/2 Nom.)	
		A	B	A	B
UADQCP		33.5	22.5	37.5	24

Auto Switch Mounting

Using the special nut shown below, fix the auto switch in the specified position with two screws. (The proper tightening torque of set screws is 6 kgf · cm.)



The auto switch can be mounted in three positions-A, B and C-shown above.

ACP

UACP

AX

AS

AM

AL
ALX

UARD

UAQ

AJ

AG

UAG

ADM

ADR

AMR

UAMR

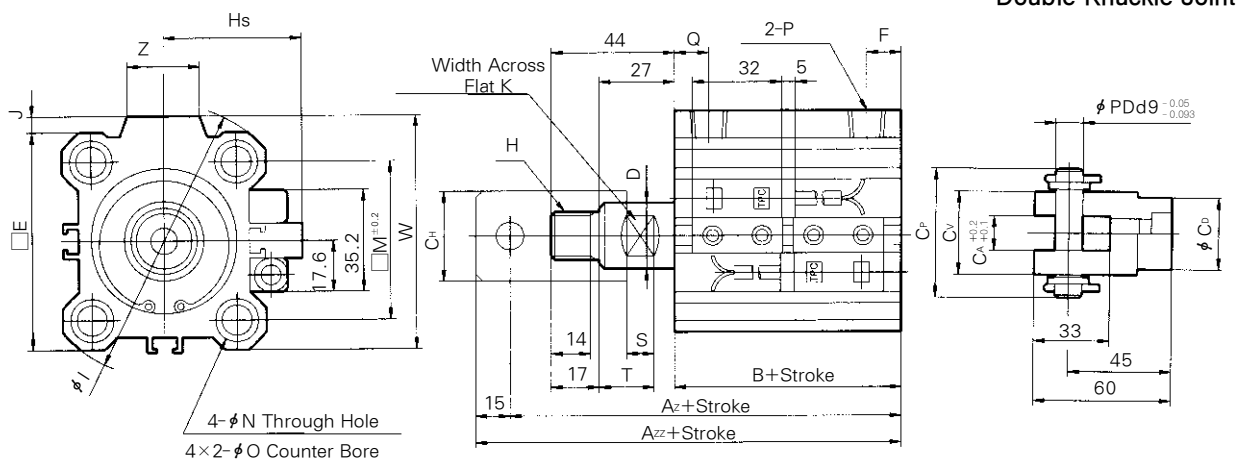
AST

W~

Series UADQCP

Dimensions

Bore Size : $\phi 50$ (2Nom.), $\phi 63$ (2 $1/2$ Nom.)



(Unit : mm)

Bore size mm(inch)	A	Az	Azz	B	ϕD	E	F	H	ϕI	J	K	M	ϕN	ϕO	P	Q	W	Z	T	S	Hs	Cp	Cv	Ca	PD	Ch	Cd
$\phi 50$ (2Nom.)	99.5	117.5	132.5	55.5	20	64	10.5	$5/8-18UNF$	86	7	17	50	6.6	11Depth 8	$NPT1/4$	10.5	71	22	20	10	49	55	36	16	12	30	30
$\phi 63$ (2 $1/2$ Nom.)	105	123	138	61	20	77	10.5	$5/8-18UNF$	103	7	17	60	9	14Depth 10.5	$NPT1/4$	15	84	22	20	10	55.5	55	36	16	12	30	30